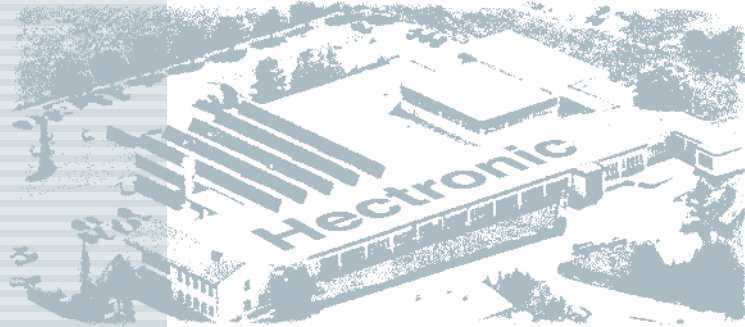




 *smart parking*



A combination of market experience and technological competence, makes Hectronic the leader in the field of parking management. 50 years ago, the mechanical Kienzle parking meter set the standard for modern technology. This has been replaced by two models of ticket machines. Nowadays Hectronic offers third generation parking management by means of integrated system solutions as well as modern communication and software products. Our concepts and products can be found on six continents and our efficient partners support customers worldwide with project management and service and system consultancy.



Ticket machines

The **PA2** meter is not only outstanding for its quality, reliability and design, but is much more than a ticket machine. Its integrated flexible system components offer intelligent parking management. Software control, communication capability, and high modularity are features which ensure the necessary safety for an investment in the future.

The **CardMaster** is a new ticket machine for cashless payment, a concept which will be adopted worldwide, to counter vandalism and to save costs of cash collection.

MultiBay Option –
for convenient parking with
indication of bay number.

CardMaster with
MultiBay Option.



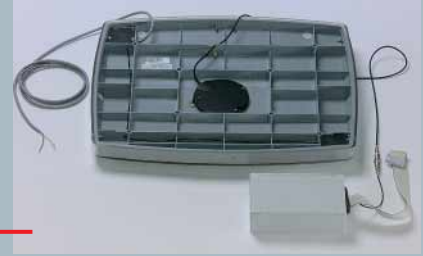
- 1 PA2 with cardreader and lamp control
- 2 CardMaster in standard execution



The PA2 solar hood – perfectly integrated and absolutely stable, it is the solution for the independent operation of the ticket machine.



Integrated disc antenna for GSM – neatly placed in the hood.



High-quality Bank Note Reader – in the currency of the country



Card Reader for electronic purse. Credit Cards and Parking Cards.



Clear display – any language can be selected. Clear layout of the keyboard. Robust 4 mm stainless steel is available in various options



Real safe – for coins and bank notes, with a 10 mm thick steel door.



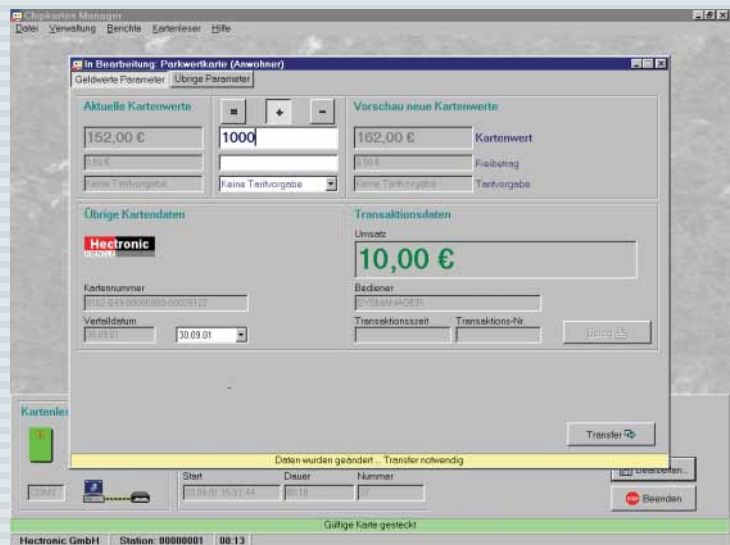
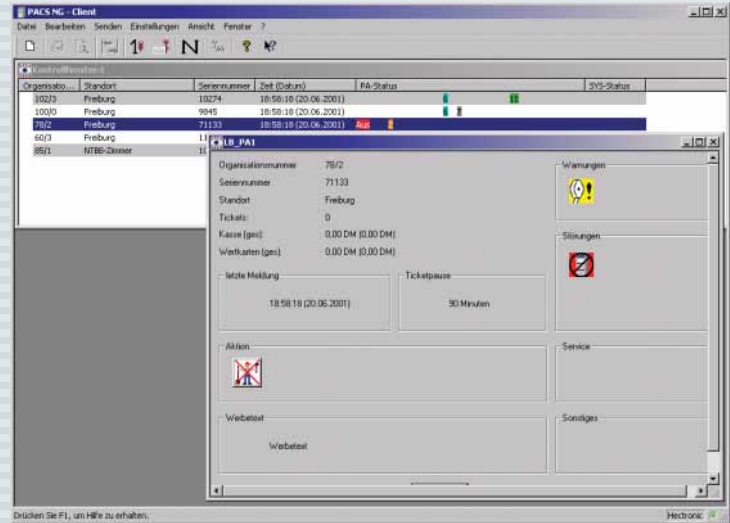
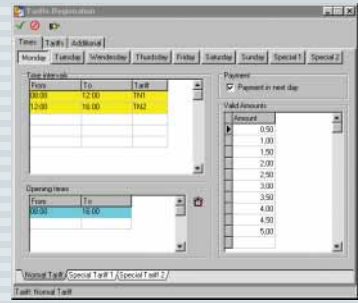
Software

Hectronic has again revolutionized parking management. Original mechanical parking meters have been replaced mostly by electronic parking meters and ticket machines during the last ten years. Due to the rapid development of communication technology, computer technics and the Internet, we have introduced Software solutions to provide better investment decisions. Our Integrated Traffic Management, Data Bank applications, Client-Server solutions and M-commerce represent efficiency gains for the future.



PA MANAGER

The New PA-Manager is a future orientated software package, that provides an answer to most management queries. All modules operate under Windows 2000 and use Sybase as a central, relational data bank. The Client-Server technology offers safe access for local Networks via the Internet.



With the PA-Statistics Manager, the efficiency of the machines is increased. Statistical data from the ticket machine can be evaluated according to various criteria and then processed. The transfer of statistical data can be carried out manually or by means of Memorycard or by radio via the PA-ControlSystem.



Via the PA-ControlSystem (PACS) Message Server, the operator can send and receive status messages and short messages by means of GSM or radio trunking between the ticket machine and the central office. PACS displays short messages, warnings and diagnostics to different phone numbers and stores them in a Data Bank. Important messages can be transferred by e-mail or as an SMS message to a



mobile. The Client-Server technology allows the simultaneous access of several users with individual options. The information from the Data Bank can be prepared as requested and further processed.

With the PA-Tariff Manager tariffs can be easily changed on parking ticket machines. Furthermore the operator can edit display texts as well as advertising texts on the parking ticket. The software offers data bank support for administration of ticket machines as well as the possibility to test tariffs on the PC before recording into the machines.



For parking cards the ChipCard-Manager is an indispensable tool. With this an operator can charge up value cards and issue receipts, invoices and reports. Special tariffs for residents or free parking rights can be included with the ChipCard-Manager and transferred onto Parking Cards.



Worldwide

Our ticket machines and software are developed for the global market. Our success is supported by the competence of our sales and service partners.

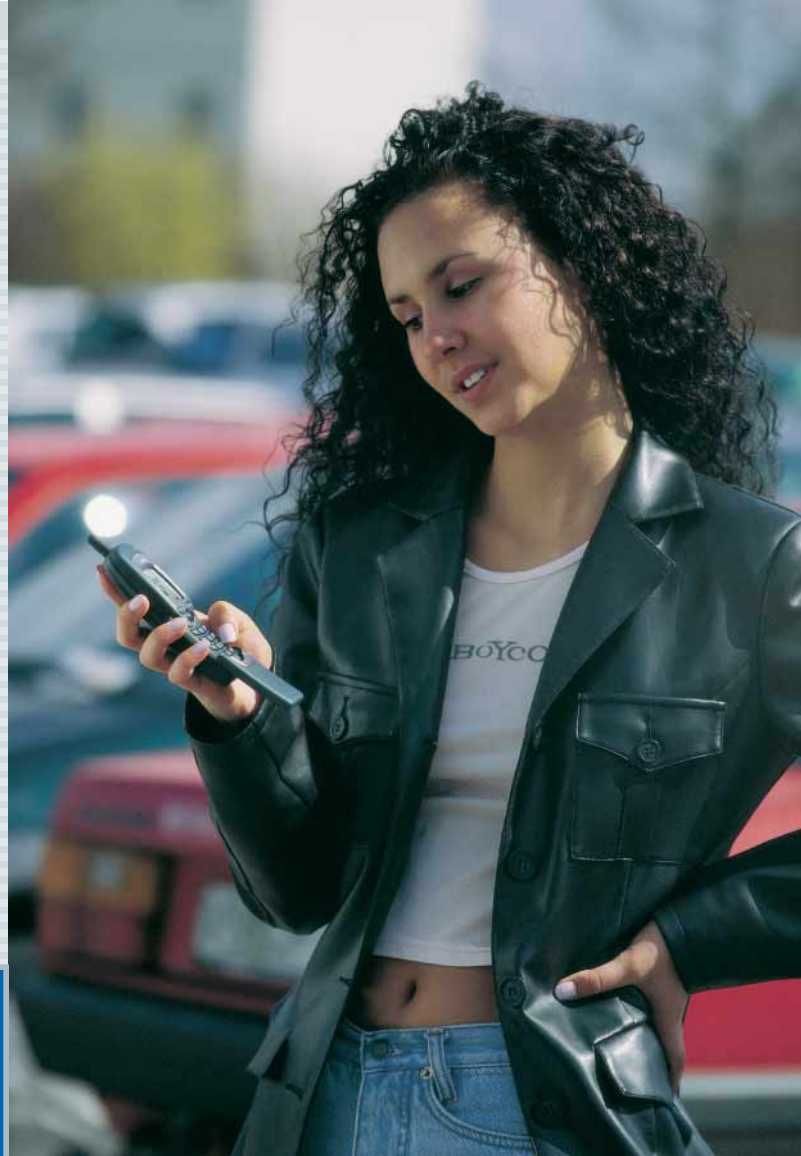
- 1** In **Graz**, Vienna, 410 machines have been installed between 1999 and 2001 by our Austrian Partner GESIG. The machines are equipped with street light connection and external solar modules and accept the Austrian Quick-card. All machines are networked via the PA-ControlSystem and transfer transaction data by GSM.
- 2** In **Leichhardt**, in Sydney Australia, 460 parking ticket machines have been installed in 2001 by our local partner WILSON EQUIPMENT SERVICES. 180 are in Multibay Version (indication of bay number) and 280 are for parking ticket issue. All machines are networked via GSM, equipped with solar hood and process the Hectronic parking chip card.
- 3** In **Medellin**, Columbia our partner INVERSIONES, KOLUMBIEN, installed 85 solar powered parking ticket machines in 1999 with chipcard reader for the Hectronic parking card.
- 4** Between 1997 and 2001 our partner PARKLI in Lithuania installed 70 cashless meters in **Kaunas**. Only in a few European cities are cashless machines installed without coin acceptance.
- 5** In **Frankfurt** our German partner GLEICHAUF installed 350 meters between 1995 and 2000. They process the German GeldKarte and are networked with radio trunking technology via the PA-ControlSystem.
- 6** Our partner MULTIFROTA in Portugal installed 650 ticket machines in **Lisbon** between 1998 and 2000. The machines are equipped with integrated solar hood and accept the Portuguese PMB-card.



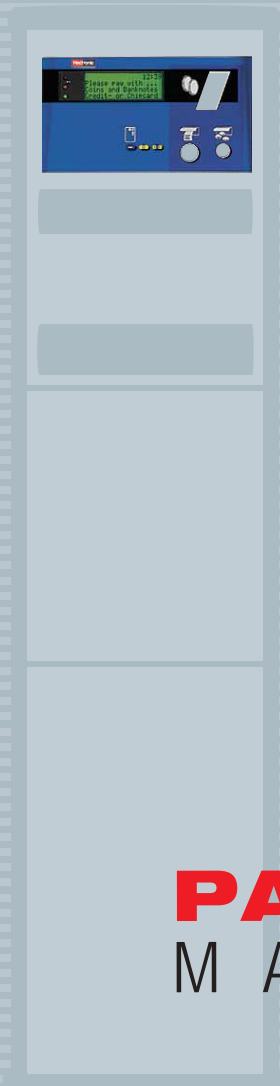


Quality

Quality starts at Hectronic with the selection of high-quality components and is continued for the total development, production and testing process. For the Software the selection of tools as well as the safe and simple system integration is most important. The basic modularity of our machines is also an important quality feature. It enables the optimum arrangement of components, the simple adjustment to latest technologies and fast remedy in case of service. For our sales and service partners quality is the foundation for long and mutually successful cooperation. We follow-up our quality service and technology and are very actively involved in innovative developments and projects such as parking with mobile, Internet connection and M-commerce. Your decision to select Hectronic is therefore a decision for quality with a long future.



 *smart parking*



PA 
M A N A G E R

Hectronic GmbH
Allmendstraße 15
D-79848 Bonndorf
Tel: +49 (0) 77 03 - 93 88 - 0
Fax: +49 (0) 77 03 - 93 88 - 60
mail@hectronic.com
www.hectronic.com

Hectronic AG
CH-5200 Brugg
Tel: +41 (0) 56-4 60 74 74

Hectronic France Sarl
F-94106 Saint Maur Cedex
Tel: +33 (0) 1 43 978 078

Hectronic Italia S.r.l.
I-20159 Milano
Tel: +39 0340 53 314 37

Hectronic Polska Sp.z.o.o.
PL-42-200 Częstochowa
Tel: +48 (0) 34 32 26 551